



BLATCH

FINE HOMES

Tel: +44 (0) 24 7624 9333

info@blatchfinehomes.co.uk



12 Meriden Road

Berkswell, Coventry, CV7 7BG

Offers over £275,000



2



3



1



D

12 Meriden Road



Description

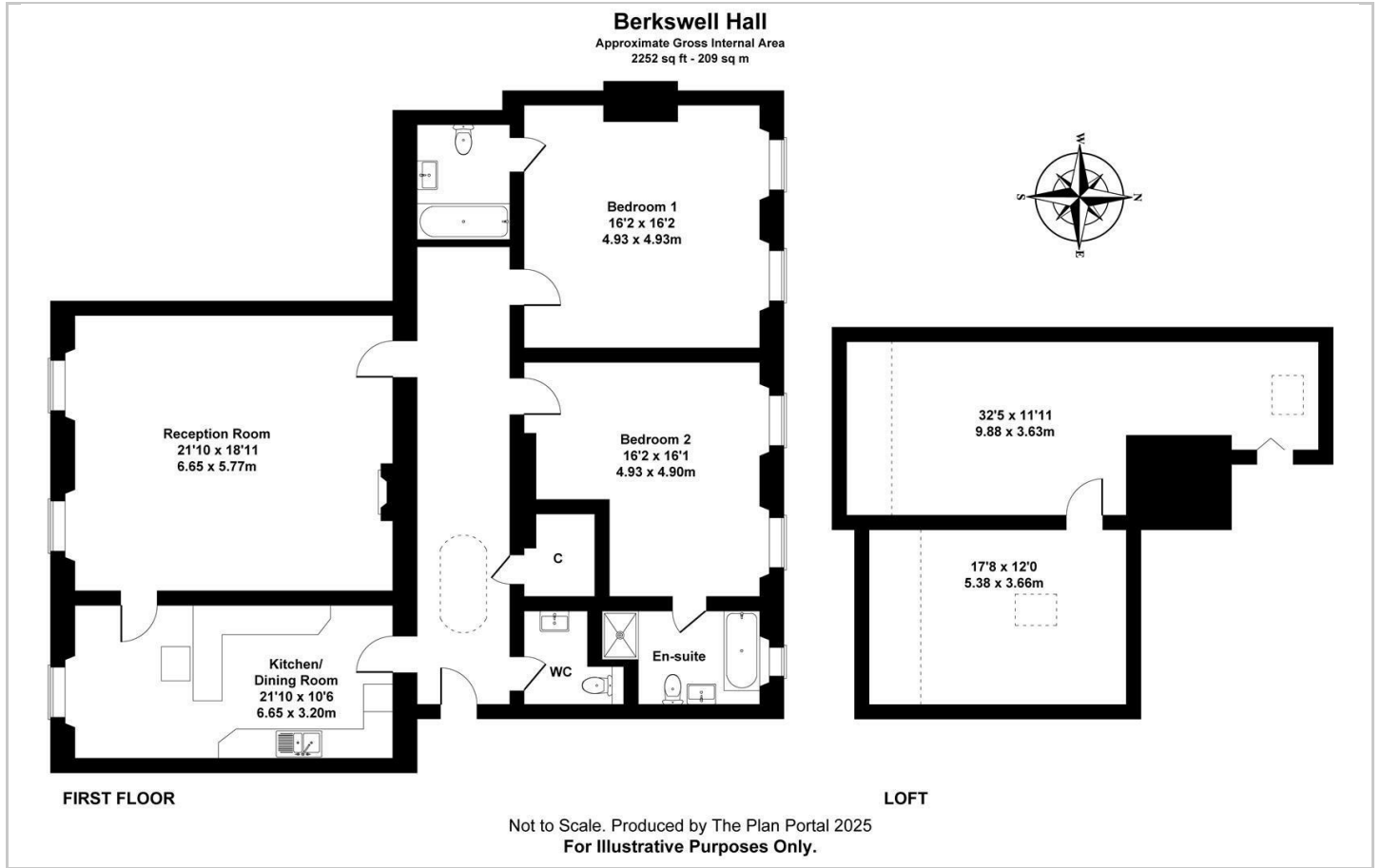
PRICED TO SELL - Berkswell Hall is a Grade II* listed 19th-century country house located in Berkswell, near Meriden in the West Midlands, England. The estate's history traces back to the 16th century. Occupying a superb position within the heart of the main house, Apartment 12 is a beautifully presented first floor two bedroom home enjoying uninterrupted south-facing views over open countryside and a picturesque lake teeming with wildlife.

- Outstanding Countryside Views
- First Floor Apartment
- Period Property With a Rich History
- EPC Rating D
- Services £2500 approx per quarter - Long Lease
- Two Spacious Double Bedrooms
- Beautiful Skylight Upon Entrance
- Serene Quiet Setting
- Council Tax Band F

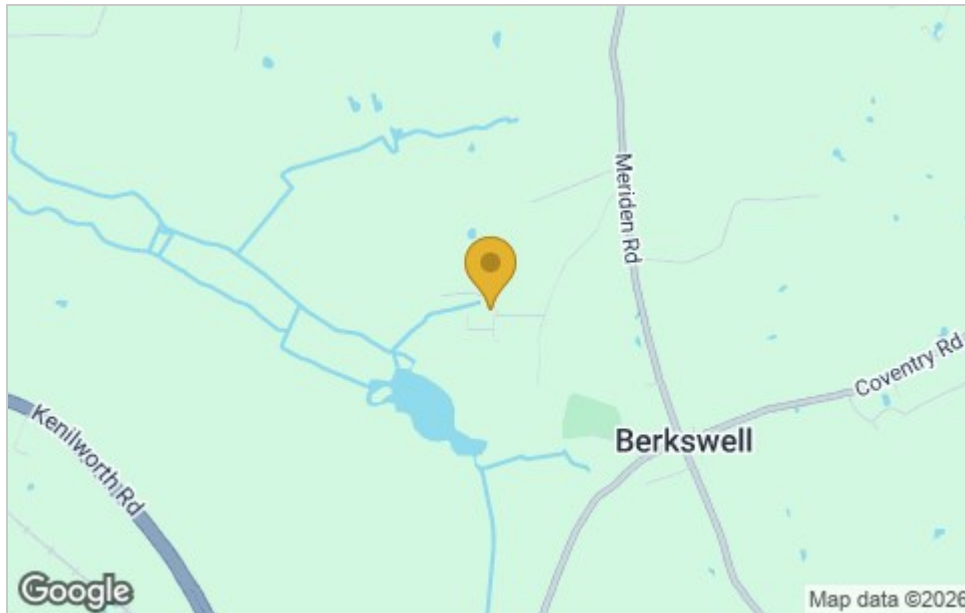




Floor Plan



Area Map



Viewing

Please contact our Coventry Office on 02476249333 if you wish to arrange a viewing appointment for this property or require further information.

These particulars, whilst believed to be accurate are set out as a general outline only for guidance and do not constitute any part of an offer or contract. Intending purchasers should not rely on them as statements of representation of fact, but must satisfy themselves by inspection or otherwise as to their accuracy. No person in this firm's employment has the authority to make or give any representation or warranty in respect of the property.

Energy Efficiency Graph

